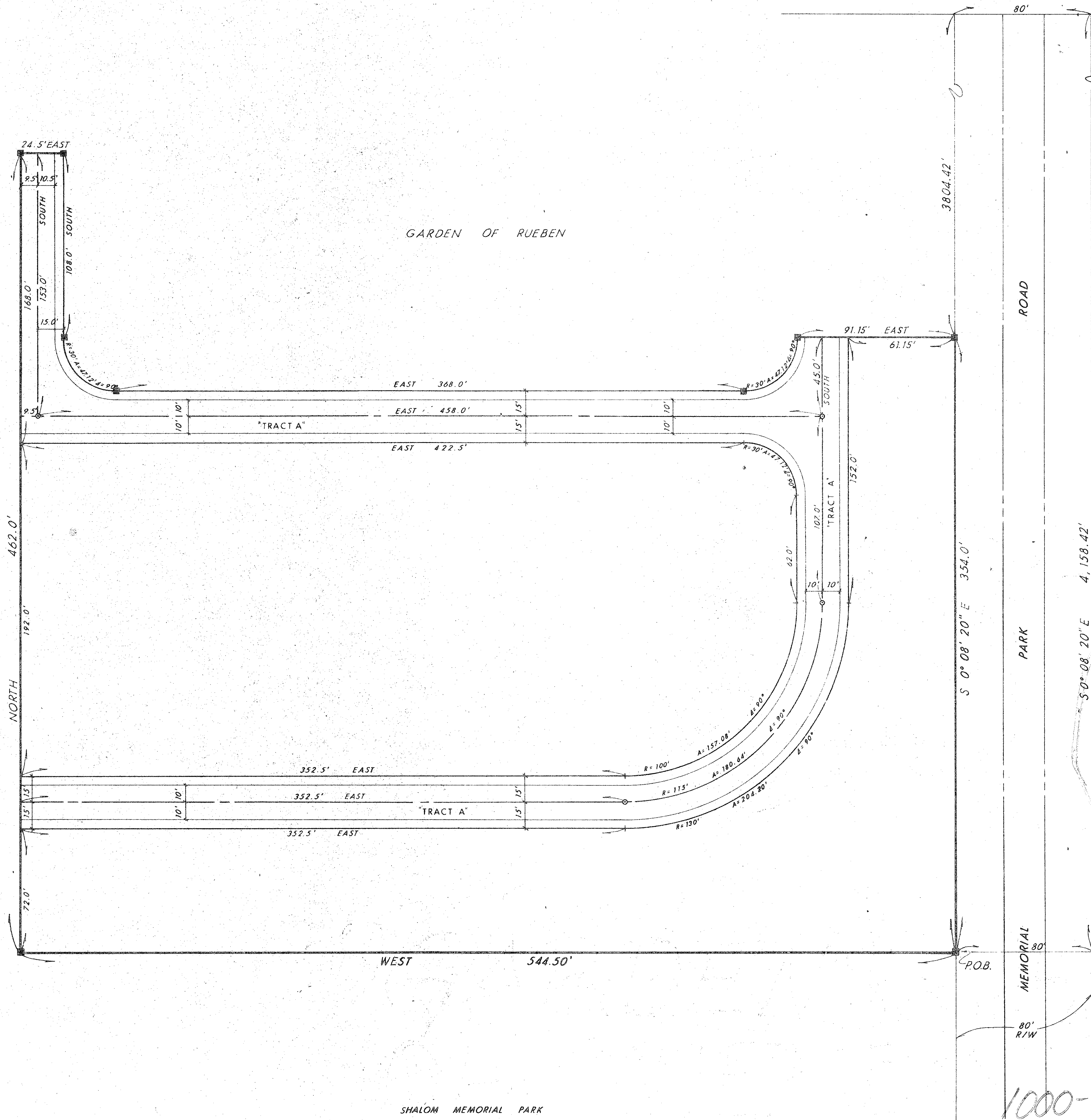


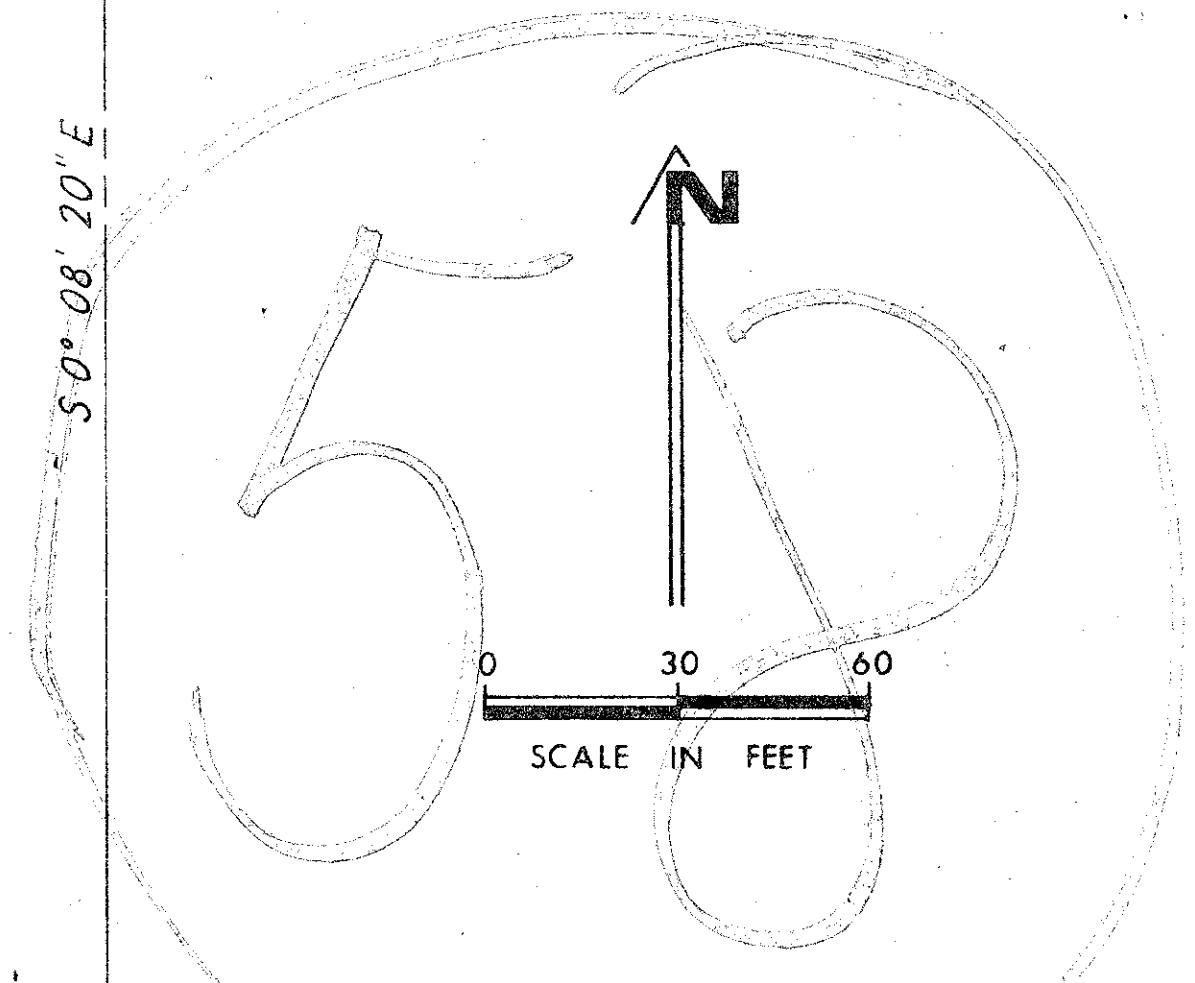
STATE OF FLORIDA
COUNTY OF PALM BEACH

THIS PLAT WAS FILED
FOR RECORD AT _____ M,
THIS _____ DAY OF _____
19____, AND DULY
RECORDED IN PLAT
BOOK NO. _____ ON
PAGE _____ JOHN B.
DUNKLE, CLERK OF THE
CIRCUIT COURT BY _____, D.C.



FIRST ADDITION
GARDEN OF RUEBEN
A REPLAT OF A PORTION OF
'SHALOM MEMORIAL PARK' IN
SECTION 14, TOWNSHIP 42
SOUTH, RANGE 41 EAST, PALM
BEACH COUNTY, FLORIDA

APRIL 1976



NOTE:
THE BEARINGS AS STATED HEREON, AND SHOWN
HEREIN, ARE BASED ON THE BEARINGS AS
SHOWN ON SAID PLAT OF "SHALOM MEMORIAL
PARK" PLAT BOOK 31 PAGE: 194-195

31/248

1000-189